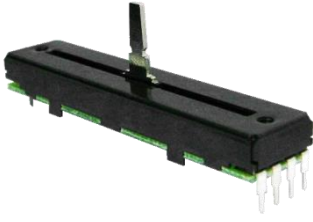


# SLIDE POTENTIOMETER

## Rail Master Type

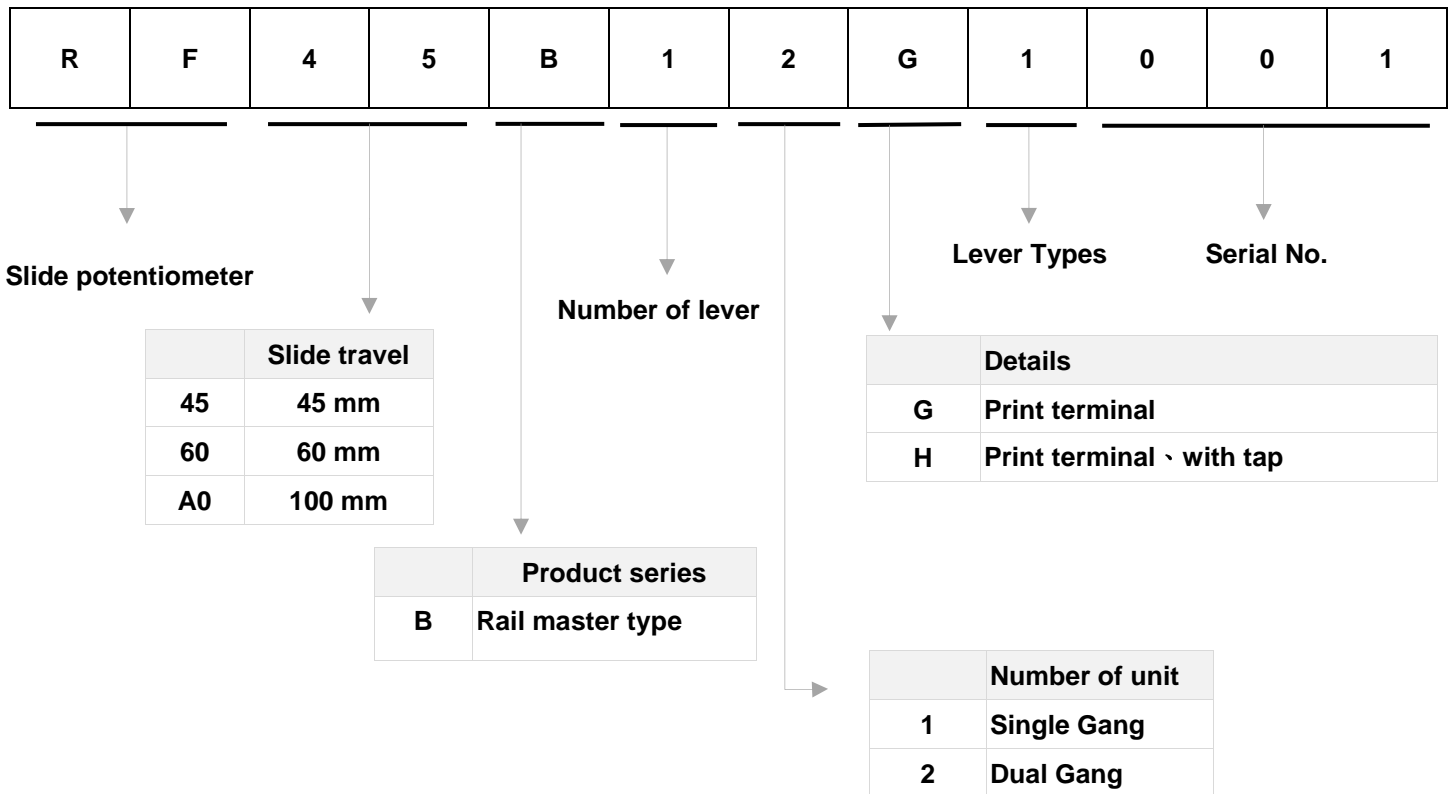


### ◆ FEATURE

- Excellent operation feeling and high-precision characteristics.
- Low residual resistance and long life.

### ◆ APPLICATIONS

- Fader control in mixer and high grade audio.



### ◆ COMMON SPECIFICATIONS

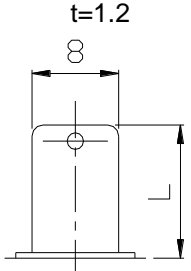
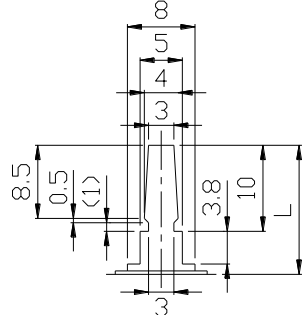
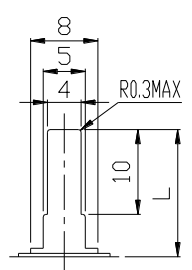
Characteristics	Specification
Operating temperature range	-10°C to +70°C
Operating force	50 gf MAX
Total resistance (KΩ)	5 、 10 、 20 、 50 、 100 、 250 、 500
Total resistance tolerance	±20%
Resistance taper	A,B,C
Sliding service life	100,000 cycles

# SLIDE POTENTIOMETER

## Rail Master Type

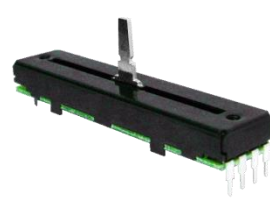
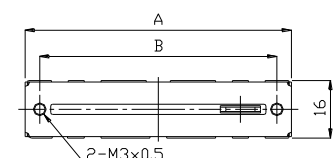
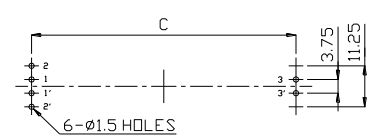
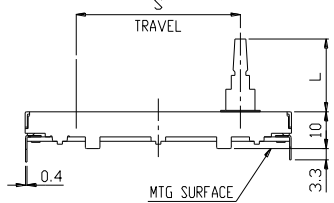
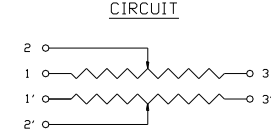
### ◆ LEVER TYPES

Unit : mm

Material	Metal lever					
Lever type	1		4		6	
Dimensions	$t=1.2$		$t=1.2$		$t=1.2$	
						
Length (L)	12		13	15	20	25

### DIMENSIONS

Unit : mm

Model	Dimensions		
RF□□B			
			

#### P.C.B Mounting hole detail

Model	S	A (S+28)	B (S+20)	C (S+27.5)
RF45B	45	73	65	72.5
RF60B	60	88	80	87.5
RFA0B	100	128	120	127.5